

A university that leads to a sustainable future with human-centric, creative convergence education

SAHMYOOK UNIVERSITY

# SAHMYOOK UNIVERSITY

A university that leads to a  
sustainable future with human-centric,  
creative convergence education



A university that leads to  
a sustainable future with human-centric,  
creative convergence education

SAHMYOOK  
UNIVERSITY



www.syu.ac.kr  
Tel\_ 02.3399.3636 Fax\_ 02.3399.3811  
815, Hwarang-ro, Nowon-gu, Seoul, 01795 Rep. of KOREA





SU-Glory 2030

Our Motto

Education that Changes Man, University that Changes the World

Our Ideology

We contribute to society through holistic education which balances the elements of spiritual, intellectual, and physical education.

Our Goal

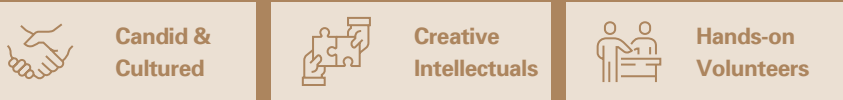


We aim to train holistic men and women rooted in Mission, Vision, and Passion.

Our Mission

Cultivating Sahmyook MVPs (Glocal Volunteers of Truth and Love)

Our Prospective Talents



Core Competencies



We welcome you with open arms to Sahmyook University(SU), where we unfold the sustainable future with a human-centric convergence of creativity!

CONTENTS

**SU Brand** Human-centric 04 | Creative Convergence 06 | Sustainable Future 08 | History of SU 10 | President’s Message 12

**SU’s Specialization** Human-ICT Convergence 14 | Specialization in Bio-Eco Convergence 16

**Human-centric** Personality & Leadership Education 18 | Social Volunteering 20

**Creative Convergence** Innovation Education 22 | Industry-Academy R&D 24

**Sustainable Future** Soft-landing for Recruitment & Ventures 26 | Globalization 28

**Colleges and Schools** Undergraduate Programs 30 | Graduate Programs 46 | Centers & Institutions 48 | Campus Map 50





At Sahmyook University, we instill love for mankind in the hearts of all students. They will experience a sense of wonder and fulfillment as they practice this love.





SU teaches students how to “solve problems.”  
As we approach the AI-driven era,  
simple knowledge alone cannot solve multi-faceted and complex issues.

SU students learn far beyond their major courses.  
They gain knowledge in a variety of fields and vastly acculturate themselves to become  
renaissance men and women as they boldly and creatively navigate toward a new era.





SU keeps up with the changing of the times.  
We produce new experts tailored to the ever-changing industrial environment.  
With our exclusive curriculum set in place as the engine for sustainable growth,  
SU develops experts who can change the world.



# SU is marching towards a brighter tomorrow connecting the past and the future

1900	Oct. 10, 1906	Euimyung School established in Soonan, Pyeongannam-do Province, Pastor Smith inaugurated as the founding principal
1930	Apr. 06, 1931	Relocated to SDA HQ(Hoegi-dong, Dongdaemoon-gu, Seoul)
1940	May 1942	School closed under coercion by Japanese imperialist system
	Sep. 01, 1947	Reopened as Chosun Conference Theological Seminary at SDA HQ
	Nov. 13, 1949	Relocated to Yangjoo-gun, Nohaymyeon, Gongdeukri (Currently Hawarang-ro 815, Nowon-gu, Seoul)
1960	Jun. 1961	Renamed as Sahmyook Theological Seminary after being accredited as a 4-year college by the Ministry of Education
	Mar. 01, 1967	Renamed as Sahmyook College
1970	Dec. 19, 1973	Opened Sahmyook Institute of Technology under approval
1990	Mar. 01, 1992	Changed name to Sahmyook University
	Feb. 18, 1993	Opened SU branch school in Yuzhno Sakhalin, Russia
	Oct. 10, 1997	Held 50 <sup>th</sup> anniversary ceremony
2000	Nov. 11, 2002	Established and announced University Identity(UI)
	Dec. 02, 2005	Merged with Sahmyook Euimyung College under approval by Ministry of Education and Human Resources
	Sep. 14, 2006	Declared 2nd establishment and held vision announcement ceremony
	Sep. 14, 2006	Obtained ISO9001
	Oct. 10, 2006	Celebrated the centennial anniversary
	Mar. 01, 2007	Opened SU MVP certification program
	Aug. 06, 2007	Awarded with prize for “Best Management Practice as 4-year Private University” by the Korea Advancing Schools Foundation
	Oct. 22, 2007	Completed construction of Centennial Memorial Hall
	Sep. 2008	Ranked as 8 <sup>th</sup> in 2008 National University Management Assessment by the Korea Advancing Schools Foundation
	May 09, 2009	Selected as operator of Education Empowerment Project, funded with KRW 1.11 Bil. by the Ministry of Education, Science, and Technology
2010	Feb. 08, 2010	Produced 1,011 Class of 2010 students since the merge
	Mar. 18, 2011	Won “2011 Korea True Education Award(Character Building)” by Korea Federation of Journalists Corp.
	Feb. 28, 2012	Selected as “Best University in Providing Education and Welfare to Students with Disabilities in 2012” by the Ministry of Education, Science, and Technology
	Sep. 01, 2013	Received “2013 University Evaluation Accreditation” and selected as “Best University for Vision Dream MVP Education and Social Volunteering” by the Ministry of Education and Korean University Education Institute
	Jul. 01, 2014	Selected as the recipient of “Top Metropolitan University for Specialization Support Project(CK-II)” by the Ministry of Education, funded with KRW 1.732 Bil.
	Jun. 30, 2016	Announced long-to-mid term development plan “SU-MVP+ Plan 2025”
	Apr. 28, 2017	Selected as the recipient of “Academic Competency Empowerment Project (ACE+)” by the Ministry of Education

Sahmyook University was founded in 1906, where Korean modern education began to take place. Building on the past 116 years of history and tradition, SU is leaping towards a new century. We contribute to human society by offering holistic education in all aspects of body, mind, and spirit to open a sustainable future through human-centric creative convergence.

	Dec. 22, 2017	Certified by “International Education Quality Assurance System(IEQAS)” by the Ministry of Education and National Research Foundation of Korea)
	Aug. 23, 2018	Selected as “Autonomous Improvement University” based on Basic Competency Analysis on Universities conducted by the Ministry of Education
	Sep. 03, 2018	Selected as recipient of “Support for Innovation in Universities Project(Type-I)” based on Basic Competency by the Ministry of Education
	Sep. 14, 2018	Selected for “Campus Town Unit-type(Phase-II) Pilot Project” by the Seoul Metropolitan Government
	Apr. 05, 2019	Selected as recipient of “National Subsidiary Project for Innovative Universities” by the Ministry of Education
	Jun. 28, 2019	Received “University Evaluation Accreditation,” and selected as “Best University” by the Ministry of Education
2020	Apr. 10, 2020	SU’s Job Headquarters selected as the operator of “Large-scale Project” by the Ministry of Employment and Labor
	Apr. 22, 2021	Selected as recipient of “SW-centric University Project” by the Ministry of Science and ICT
	Sep. 03, 2021	Selected as recipient of “General Funding for Universities based on the Basic Competency Analysis on Universities” conducted by the Ministry of Education in 2021
	Oct. 13, 2021	Held 115 <sup>th</sup> anniversary ceremony, and declared vision “SU-GLORY 2030”
	Mar. 04, 2022	Employment* Center selected as “Base-type Operation University” by the Ministry of Labor
	May 25, 2022	Selected as the operator of “K-Move School” for five consecutive years by the Ministry of Employment and Labor
	May 31, 2022	Selected as the recipient of “2022-2024 Support Project for Best University for contributions in High School Education” by the Ministry of Education
	Jul. 02, 2022	Selected as the recipient of “Semiconductors Major Track Project” by the Ministry of Education and the Ministry of Trade, Industry, and Energy
	Sep. 22, 2022	Selected as the recipient of “Project for Developing Convergence Talents in IP of New Industries” by the Ministry of Education and the Korean Intellectual Property Office
	Oct. 11, 2022	Held 116 <sup>th</sup> anniversary ceremony, and announced SU’s ESG Vision and official mascot
	Jan. 31, 2023	The Ministry of Employment and Labor selects SU as provider of Customized Employment Services for Students.
	Feb. 15, 2023	The Ministry of SMEs and Startups selects SU for the Venture Startup Academy program.
	Apr. 4, 2023	The Korea Scholarship Foundation selects SU as the host university for the Blue Ladder Project for the fifth consecutive year.
	Aug. 8, 2023	SU holds the ICISAA international conference.(08~10)
	Aug. 11, 2023	SU joins forces with Adventist universities around the world in launching a MOOC-based Shared University program.
	Aug. 30, 2023	SU obtains a 5-year certification from the University Institutional Evaluation and Certification Board.
	Feb. 20, 2024	The Ministry of Employment and Labor selects SU as Hub University for the University Job Plus Center.
	Mar. 1, 2024	Dr. Hae-jong Jae is appointed as the 16th president of SU.





“  
Education that Changes Man  
University that Changes the World  
”

Innovation echoes across the globe. True innovation begins with the transformation of individuals.  
Without first transforming individual minds, innovation loses its essence.  
It merely stirs up discord and confusion.

Remember, innovation isn't what transforms minds. No. Rather, it's the transformed individuals that  
change the world and drive genuine innovation forward.

Education that Changes Man, University that Changes the World.

Since its inception in 1906, Sahmyook University has embraced the responsibility of revolutionizing  
the world through progressive education, spanning over a century.

Sahmyook University will continue to cultivate individuals who champion holistic education,  
promoting intellectual, spiritual, and physical well-being. Our goal is to nurture leaders who  
embody the spirit of truth, love, and service, in our pursuit of creating a warm and beautiful world.

We extend a warm invitation to be part of the journey towards the promising future Sahmyook  
University envisions.

President of Sahmyook University **Hae Jong Je** 





## 4<sup>th</sup> Industrial Revolution Era With human-centric technological convergence, SU will create a warm and kind future.

Designated as the “Top Metropolitan University for Specialization Support Project(CK-II)” and “SW-centric University” by the national government, SU secures competitive strengths in ICT to prepare for the 4<sup>th</sup> Industrial Revolution era. With over 100 years of know-how accumulated in health science, SU is creating new innovative values by converging the latest ICT technologies, including SW, big data, AI, and more.

### SW-centric University

Designated as the “SW-centric University” by the Ministry of Science and ICT, Sahmyook University secured nearly 5 billion Korean won for a maximum of six years(4+2 years). SU is currently running SW training programs to “develop talents converging SW and health science for a healthy local community.”

#### Basic SW Training Courses

SU offers 2-track curriculum for every student (including pre-undergraduates) and each major (liberal arts, social science, fine arts and sports/ natural science, engineering). By learning how to think based on SW algorithm, students are developing basic competency to solve various problems rising from their respective major course using SW.

#### Advanced SW Training Courses

These courses are designed for SW-centric department students who major in Computer Engineering, AI Convergence, and others. Students will learn from SW basics such as big data, IoT, data science, and deep learning to core/professional/problem-solving competencies.

#### SW Convergence Course

This course is an interdisciplinary program between SU's health science specialization courses and SW.

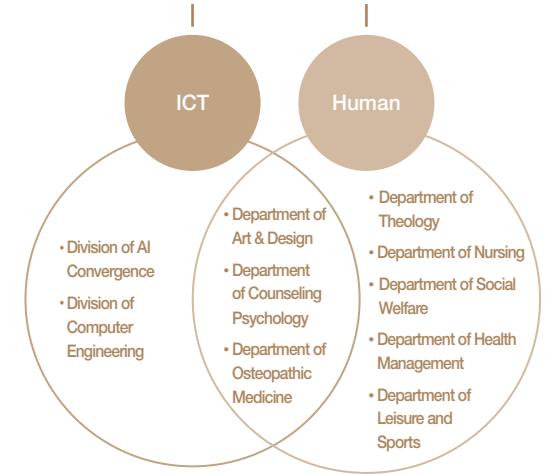
The three courses – SW Addiction Psychology, SW Addiction Rehabilitation, and SW Health Big Data – are currently open and held to train talents in SW health science convergence and create social values for a healthier local community.



### Specialization in Human-ICT Convergence

#### Building Competencies in Human-ICT Convergence Education and Research

- SW-centric University (Counseling and Rehabilitation on Addiction)
- AI + Smart Care
- Intelligent Semiconductors + Smart Healthcare



### Material, Parts, Equipment(MPE) Engineer Training Course for Semiconductors

SU was selected as the recipient of “Semiconductor Major Track Project,” a talent-development program jointly sponsored by the Ministry of Education, Ministry of Trade, Industry and Energy, and Korea Institute for Advancement of Technology. With 900 million Korean won of funding, we have opened the “Material, Parts, and Equipment Engineer Training Course for Semiconductors” led by the Division of AI Convergence and the Department of Chemical Life Science, and will train 120 system semiconductor experts by 2025.

#### 1st Business Year

Open and run classes on eight major processes, element characteristics, measurement, and more, led by former Samsung Electronics Semiconductor R&D Center professors

#### 2nd Business Year

Open basic courses on Semiconductors Equipment Analysis at the Department of Chemical Life Science and AI SW at the Division of AI Convergence.

#### 3rd Business Year

Introduce on-the-job courses including hands-on curriculum, industry-academy joint projects, internships, and others by opening convergence courses and cooperating with companies



Picturing a warm future with human-centric technological convergence in the 4<sup>th</sup> Industrial Revolution era



# ESG Era

## Mapping a sustainable future with medical science and ecology convergence



SU is stepping up as the “biomedical high-tech university” by specializing in medicine science and ecology. We are developing future bio convergence experts and creating new values by researching and teaching future promising industrial trends including bio medicine, functional food and cosmetics, and smart and mental healthcare.

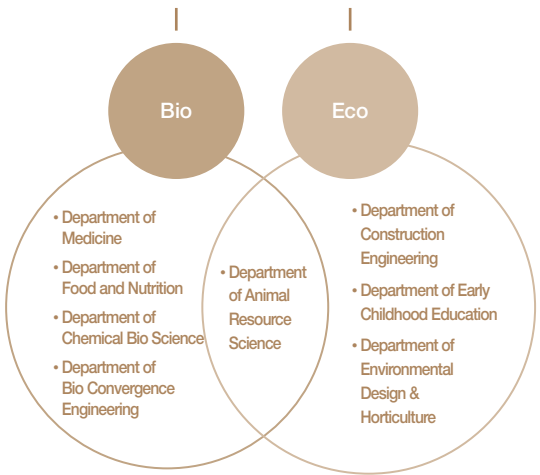
### Bio-eco Convergence Course

SU offers meta-converged bio education program in the area of industrial bio, medical science and healthcare, ecological environment, and others. We are currently developing a bio literacy educational program for the entire students to enroll, as well as various other convergence courses including • “Brain and cognitive science Convergence Course” such as counselling psychology, brain and cognitive engineering, AI, and • “LB&C Convergence Course” which offers courses on language, brain, and computers.

#### Specialization in Bio-eco Convergence

Community care with meta-converged bio educational model

- ESG technological convergence based on bio medicine, cosmetics, and functional food
- Converging research on smart/mental healthcare and cooperating with businesses
- Training creative convergence eco healthcare experts



### Sahmyook Health Stay

The program applies the NEWSTART health message academically, and trains leaders who will disperse throughout the local community. The program offers higher immunity to prevent various diseases, and is applied as natural cures through home application with lectures and practices on vegetarian diet, exercise, water, sunlight, temperance, air, rest, and relationship and trust.

### Nowon Green Campus Town

SU is operating the “Nowon Green Campus Town” project along with Nowon-gu Office and Seoul Women’s University. The project aims to vitalize young entrepreneurs and the sluggish economy at university areas by harnessing students and physical assets of SU and collaborating with Seoul Metropolitan Office and the local community. SU is currently running various programs to grow together and help the local community prosper under keywords such as “the 6<sup>th</sup> industry,” “healing care,” and “Gyeongchun Line woodland path site.”

#### Healing Care Project

The project offers the urban agriculture and environmental design training course “Green Care,” psychotherapy program “Life Care” to help local residents’ sound mental care and life, and “Restart Care” to support those with discontinued careers get back on their feet again.

#### Gyeongchun Line Woodland Path Site Project

SU is revamping the Gyeongchun Line into a cultural cluster, opening many projects, including the activation of a flea market in Gongreung-dong area, the green forest rail market “Choo Choo Market,” green forest festival “Rest Forest,” “3650 Trail-walking on Gyeongchun Line Woodland Path” and others.

### Eco-farm Center

As the one-and-only high-tech urban agricultural facility within a university in the metropolitan area, maker training courses tailored to urban agriculture are in operation. Built as a glass greenhouse on the total area of 660m<sup>2</sup>, this latest eco-friendly automated agricultural facility can cultivate chemical-free organic vegetables 24/7 with sunlight and LED lighting.





# SU develops warm-hearted glocal leaders who will brighten the world

SU is provides various special personality education programs and developing sound minds and deeds with the goal of raising “socially contributing glocal leaders.”  
SU students learn how to live and sympathize with others, and share the power of change in their quest for happiness.



## Sahmyook Village Project

This project allows students to develop their own care services and launch them on the online platform where caregiving students and local recipients are matched. The project is gaining the spotlight for applying the concept of “community care” to the academic field, and caring for those requiring various services by the local community instead of facilities.



Sahmyook Village  
Project

11 stores

11 Caregiving Services  
Available Online

## HOPE Camp

HOPE Camp is a camping program focused on building relationships. Students eat alone, watch movies with others outdoors, or gather around the campfire with group counseling experts for chats during the two days. This process offers students the chance to rethink about who “I” and “we” are, and experience a moment of healing.

## MVP Camp(for freshmen)

MVP Camp is a special educational program designed as an extended version of orientation for freshmen, which can only be found at SU. Every February, SU freshmen go on an on-campus training camp for three days to turn into MVPs instilled with Mission, Vision, and Passion.

## MVP\* Education

This program helps freshmen restore their relationships with their friends, pastors, or parents. In a society where individualism prevails, SU is setting the standard for a good talent who shows socially-contributing leadership built on solid relationships.

## People’s Grocery+

This program was designed to bring social contribution through urban agriculture and allows students to raise and harvest crops by themselves and share with families and neighbors.

## Conservatory

“You too can play an instrument!” This program offers an opportunity for every student to master one musical instrument during their college years. Students can learn to play piano, violin, cello, organ, flute, guitar, viola, clarinet, or sing at a reasonable price.

MVP

Competencies of  
SU MVP

6 Core Competencies

- Sense of Civic Duty
- Creative Thinking
- Glocal
- Communication
- Self-driven
- Sharing







## SU brings good to the world with the spirit of love and volunteering

For SU, social volunteering matters.  
We spread good influence over the local community through student-driven,  
local community-centered, and process-led social volunteering education,  
and develop talents with a sound and global mindset.

**Social Volunteering tailored to  
Local Community**  
SU students can receive credits from their  
social volunteering classes and participate in  
community service regardless of their year and  
department.

**Contribution to Local Community**  
This program is offered both during regular  
and seasonal(Summer/Winter) semesters. Stu-  
dents can choose to volunteer at any institution  
connected with Volunteer Management Sys-  
tem(VMS).



**Customized Volunteering Program**  
Teams comprised of an academic advisor and  
more than 15 students respectively from each  
department are sent nationwide during holi-  
days to serve as a student-driven short-term  
volunteering team.

**Domestic Volunteering Corps**  
Degree Course: Academic advisors and stu-  
dents form a team to volunteer at local Korean  
childcare and senior welfare centers by teaching,  
treating, constructing, and other endeavors.  
Non-degree Course: While this course shares  
the same volunteering activities with the degree  
course, there are no obligations to open or enroll  
such non-degree course for lecturers and stu-  
dents respectively.

**Global Volunteering Program**  
SU's global volunteering program continues to  
gain more spotlight, as Korea is becoming a  
prominent national brand around the world.

**Overseas Volunteering Corps**  
We are actively dispatching large-scale overseas  
volunteer teams to nurture 'servants of truth and  
love'. Sahmyook University volunteer teams are  
making a positive impact in countries such as  
Vietnam, Laos, Uzbekistan, East Timor, Kenya,  
Bangladesh, and more.



**Non-degree Social Volunteering Program**  
Besides degree courses, SU strongly encour-  
ages students to participate in various non-de-  
gree social volunteering activities. This nudges  
students to take the initiative in volunteering  
and develop their servant leadership.

**Volunteering Clubs linked with Major Courses**  
This volunteering club gathers academic advi-  
sors, seniors, and juniors from the same major  
who share similar interests. Students can con-  
duct research and volunteer through this club  
at the same time, and build strong ties and  
knowledge on their respective majors. The club  
also serves as a venue for socializing between  
seniors and juniors.

**Undergraduate Talent Donation Camp**  
Sponsored by the Korea Student Aid Founda-  
tion, this community service program allows  
students to form teams and run mentoring  
camps to young students from families margin-  
alized in our society or those in remote areas  
such as farms, mountains and fishing villages.



2022  
Summer/Winter Volunteer  
Teams in 2023

443volunteers

During the summer, 20  
teams comprising 278  
members, and during  
the winter, 14 teams  
comprising 165 mem-  
bers engaged in various  
community service  
activities domestically  
and internationally.



# SU, the Leader of Education in Korea

The future of a nation depends on universities, and universities depend on innovations in education to develop further. As the 4<sup>th</sup> Industrial Revolution and digital transformation are bringing drastic changes in every part of our society, SU's Institute for Innovative Education is leading innovation in college education and developing key talents required for the future.



## Institute for Innovative Education

As SU's presidential body, the Institute for Innovative Education oversees the entire innovation in SU's education by maximizing the competencies of faculty and students, as well as improving the quality of education. The Institute is supported by four centers; Center for Teaching & Learning, Center for Education Accreditation, Center for Extracurricular Activities, and Distance Education Center. Resided by many research professors, research scientists, research associates, and administrative staff, the Institute offers a variety of services to support professors and learning.

### 1 \_ Center for Teaching & Learning

SU has developed the “SU-MVP Teaching Method” to build innovative teaching and learning models for wider application among faculty members. The Center supports professors in effectively designing and operating teaching methods, and holds various consulting programs and workshops on teaching methods.

#### Training and Supporting Programs for Professors

- Workshops for new faculty members: Educating key competencies and teaching methods for new professors.
- Teaching Methodology Academy: A faculty development program aimed at enhancing the basic teaching skills of university professors.
- Improving Teaching Skills: An advanced faculty training program designed to cultivate the qualities of Sahmyook University faculty members and strengthen their expertise and capabilities for future readiness.
- Support Program for SU-MVP Teaching Methodology: Initiative to encourage the application of Sahmyook University's unique teaching-learning model, which integrates innovative teaching methods and flipped learning, in courses.
- Outstanding Portfolio Program: Fostering reflective thinking skills among professors to enhance teaching competency and improve teaching quality.
- Pedagogy Development LIST Program: A program aimed at fostering a community of professors for mutual communication, academic integration, and innovation in teaching methodology.

#### Programs for Learning Support

- Learning Community: Supporting various study groups including grade improvement, competitions, research paper publishing, license acquisition.
- SU Mate: A personalized mentoring program tailored for students such as freshmen, international students, transfer students, and change-of-major students who need support in adapting to campus life and academics. The program operates on a 1:1 or 1:2 mentorship basis.
- Step-Up Mentoring: 1-on-1 customized mentoring for mentee and mentor aiming to improve academic achievement.
- Step-Up Camp: Special lectures and tailored consulting programs held during Summer/Winter breaks for under-performers and those under academic probation.
- SU-EBE: Basic education program to improve basic academic skills.

### 2\_ The Education Certification Center

Here at Sahmyook University, we've set up an internal system to certify and assess our educational standards, ensuring they align with our university's core policies. This system acts as a feedback loop, enabling departments and faculty members to continually enhance the quality of undergraduate education.

### 3 \_ Center for Extracurricular Activities

The Integrated Center provides optimal programs to meet the needs and wants of every non-degree course for better core competency of SU students.

#### SU-Plus(Integrated Management System for Extracurricular Courses)

- Unified Portal for Extracurricular Programs: Dive into a world of opportunities through our centralized website, where you can explore and apply for a myriad of extracurricular programs offered across our campus.

#### SUtory(e-Learning Portfolio System)

- ePortfolio System: Showcase your journey and achievements through our user-friendly online platform, where you can manage and share various academic and non-academic activities. From academic accolades to professional experiences, our ePortfolio system empowers you to present your best self to the world.

#### SU-ePR(Mobile PR System for Extracurricular Courses)

- Mobile-Friendly Promotion of Extracurricular Programs: Stay connected and informed about our exciting range of extracurricular programs with our mobile app. Share your program interests with friends and earn rewards through engaging activities – it's all at your fingertips!

#### SU-Pay(On-line Store for Extracurricular Course Points)

- Electronic Currency System: Experience convenience like never before with our cutting-edge electronic currency system. Earn SU-Points by participating in extracurricular programs, and convert them into SU-Pay for hassle-free transactions at our campus and partner stores.

### 4 \_ Distance Education Center

The Center aims to improve the competency and quality of SU's distance learning system by researching and developing distance education, supporting content development, and operating a learning management system(e-class).

- SU e-class: Sahmyook University Online Learning Platform: Embark on a journey of knowledge and discovery with our diverse array of online courses. Our enhanced server capacity ensures a smooth and enjoyable learning experience, even during challenging times like the pandemic.





## SU builds technological development infrastructure where universities and companies can thrive together

The development of the upcoming future relies on the convergence between innovative companies and creative universities.

SU is training the best talents qualified for each industry backed by cooperation systems with R&D centers and industries. These collaborations are producing meaningful results, including joint R&D efforts and mutual growth with businesses and the local community.

### Industry-University Consortium/R&D Center

These bodies play vital roles in managing and supporting SU's joint projects with the industry. While actively supporting the research activities of faculty members, the two bodies are also improving systems by establishing new policies. These bodies are affiliated with Venture Incubation Center, SME-University Cooperation Center, Industry-University Supporting Center, and serve and support as umbrella bodies for attached and independent R&D centers.

#### Support for Internal/External Research

The Center encourages faculty members to deepen and widen their research of science, and supports academic research in an efficient manner. Professors can publish their research papers in domestic and foreign journals, and attract R&D funding, training costs, and symposiums in various ways with the help of the Center to strengthen SU's academic research competency. In particular, R&D funding is supported in a transparent and efficient way. Moreover, the Center aims to maximize the outcomes of the head researcher powered by the Research Administration Integrated Task Management System.

#### Technology Transfer and Commercialization Program

We at SU efficiently manage our intellectual property rights and are giving back to the local community through commercialization. The Program provides support in many ways, including interviewing inventors to spot innovative technologies, support for setting lab technology roadmaps, lab tours, on-demand technology tailored to business, and others.

#### Establishment of the 4th domestic technology holding company

The technology holding company SU Holdings is an organization that commercializes the technology held by universities. Profits are returned to the university. Currently, it operates and manages SU HealthCare Co., Ltd. for pharmaceuticals and BT, SU Samyook Agricultural Co., Ltd. for environmental design and horticulture, Ambychem Co., Ltd. for chemical and life sciences, and AnTwoBee Co., Ltd.

#### Industry-University Cooperative

The Cooperative promotes mutual growth by signing MoUs between industries and SU to share human and physical resources. Programs include joint R&D, sharing of R&D equipment, refresher and extension courses, OJT for students, scholarships, recruitment support for students, and others.



Industry-University  
Cooperative

**414** companies

Number of cooperative  
companies in various industries, including construction,  
business management,  
education, welfare,  
healthcare, engineering,  
art, and others



Affiliated Research  
Centers of R&D Center

**97** research Centers

19 Attached Research Centers  
74 Independent Research Centers  
2 Policy Research Centers  
2 Convergence Research Centers

### Venture Incubation Center

SU is contributing to the development of the nation by training "competent and fully-prepared venture entrepreneurs." From moving in to graduating(or listing), the Center supports start-ups in the area of administration promotion, and investment attraction in collaboration with external agencies.

### SME-University Cooperation Center

The Center performs consortium projects with industries and R&D centers to 1) trouble-shoot on-site issues with seasoned experts and equipment, and 2) strengthen technology innovation by receiving donations from the government and localities as matching funding for developing New Excellent Technology(NET) and New Excellent Product(NEP). In addition, the Center provides support on technology development, product and process improvement, Ppuri technology advancement for SMEs, and many more.

### Establishment of the Technology Commercialization Center

In our pursuit of innovation and technological advancement, we've established the Technology Commercialization Center. This specialized entity is dedicated to promoting technology transfer and fostering a culture of entrepreneurship. From facilitating the transition of technology to real-world applications to supporting faculty-led startups and attracting investment, the Technology Commercialization Center serves as a catalyst for driving technological innovation and economic growth.

### Laboratory Animal R&D Center

This is an animal testing facility equipped with five laboratories, a washing room, and others. Mice and rats are fed and managed to conduct animal tests and derive meaningful research results.

### Joint Machinery Laboratory

Researchers can conduct optimal studies and education by sharing high-cost and high-tech lab equipment. There are dozens of the latest machineries for chemical engineering, life science, medical science and pharmacology, food nutrition, and others. The Laboratory is also expanding cooperation with local industries in the Northeastern part of Seoul, Namyangju-si, and Guri-si.





## SU shores up students' competencies with systematic support for job landing and entrepreneurs

For SU, jobs are the first and foremost important goal for our students. We have established a system to support students to obtain jobs and opening businesses, and are providing customized recruiting services including employment strategies for domestic and foreign companies, vocational training, and others to ultimately drive up the youth employment rate.

### SU Job Headquarters

This HQ serves as a “career control tower” by integrating the venue and functions to support job landing and ventures by offering career (employment or business establishment) services tailored to students.

#### Career Development Center

The Center provides various educational programs for job-seekers to develop their vocational capacities other than their majors. The Center fully supports successful employment from admission to graduation of students in a systematic manner.

#### Start-up Support Center

The Center provides educational programs on ventures to boost entrepreneurship and teach knowledge and skills related to opening a business so that students can develop into future CEOs.

#### OJT Support Center

The Center provides “SU OJT Program,” where students can unleash their skills at companies relevant to their majors based on the theories and practices they have learned. On one hand, the Program offers students various opportunities to experience jobs best suited to their aptitude and competency. On the other hand, companies can recruit quality talents who show great skills at the site.

#### Venture Support Facilities

Venture Support  
Facilities Venture  
Training Center and  
Maker Space

1<sup>st</sup> floor,  
1<sup>st</sup> Practice Hall

Venture Incubation  
Center for Students

B1, 70<sup>th</sup> Anniversary  
Missionary Hall  
(Auditorium)



### The customized employment service project for current students

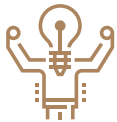
Selected by the Ministry of Employment and Labor, the 'Customized Employment Service Project for Current Students' aims to facilitate smooth entry into the labor market for young people. This project operates in two parts: the 'Build-up Project', which targets freshmen and sophomores and offers individualized career portfolio design and subsequent career competency enhancement programs, and the 'Jump-up Project', which targets juniors and seniors. It classifies youth based on their level of employment readiness, provides support for individualized employment action plans, and offers tailored employment services along with training allowances.



Employment\* Center  
Base-type Project  
Annual Operating Expense

KRW **720** million

Sum of government  
subsidiary and SU's  
matching fund



K-Move School

**162** students

K-Move School  
Program: 162  
participants graduated  
by 2023.



2023

The Blue Ladder Project

**70** students

Guam, Australia  
Completed courses on  
respective universities



Annual Budget for the  
Tailored Employment  
Services for Current  
Students Project:

KRW **744** million

Fully funded by the  
government.

### Employment\* Center Base-type Project

Since 2018, SU has been selected to operate the “Support for Employment Center at Universities” by the Ministry of Employment and Labor. Until now, SU is helping students seamlessly make inroads into society. Especially noteworthy is our re-selection as a participant in the 'University Employment Plus Center Hub Project' in 2024, enabling us to provide services for the next 5 years not only to current students but also to graduates within two years from graduation and local youths.

### K-Move School

We provide support for graduates and soon-to-be graduates who aspire to work overseas. Sahmyook University has been selected as the operating organization for the 'K-Move School', sponsored by the Ministry of Employment and Labor and the Korea Industrial Human Resources Development Corporation, consecutively since 2018. In 2022, we were chosen as the lead university for the inaugural 'University Alliance Program' and have been collaborating with participating institutions such as Daejin University, Duksung Women's University, and Seogang University to advance the initiative. Sahmyook University offers specialized programs like the 'Global e-Biz Expert Training Program' and the 'Global Design Expert Training Program', which include internship opportunities in U.S. companies.

### The Blue Ladder Project

This Project aims to develop undergraduates into global talents by providing overseas training opportunities. Sponsored by the Ministry of Education and Korea Student Aid Foundation, SU was chosen as the operator for five years in a row, thanks to its support for passionate undergraduates who continue to develop themselves and dream of building their careers despite social and economic hardships.

### Student Career Management System

This System certifies students in each area under the step-by-step educational program. Based on this System, students can make plans for all activities required to set their career paths and land a job, as well as hone skills required to make inroads into society.

**Job and Career Information System  
(SU-JPF, <https://sujpf.syu.ac.kr>)**

The System offers students their current status of various activities performed on the Job and Career Information System(SU-JPF), from their admission to graduation.



# SU students develop into global talents who go beyond national boundaries

In this ultra-national era where boundaries and languages no longer serve as barriers, a wholly different creativity is required.

SU not only sends students abroad to develop them into global citizens but also creates a global campus by attracting high-performing foreign students with our inbound globalization strategy.



## Global Outbound

SU is providing various global exchange programs for students who dream bigger to gain global experience.

### Student Exchange Program

The Program allows students to study at foreign universities that have a student exchange mou agreement. After a maximum of one year of studying abroad, students can earn up to 34 transferrable credits.

- Exchange students(English-speaking nations) /
- Exchange students(Japanese-speaking nations) /
- Exchange students(Chinese-speaking nations) /

### Top-Ten Program

This 1-year overseas studying program is for freshmen who showed the highest scores when admitted. SU and its partner universities will pay for the total expenses(tuition, round-trip flight tickets, etc.).

## Global Inbound

SU holds Korean language courses for foreign students as well. The Course includes not only Korean language classes but also various programs to get a hands-on experience with Korean culture.

### Full-time Course

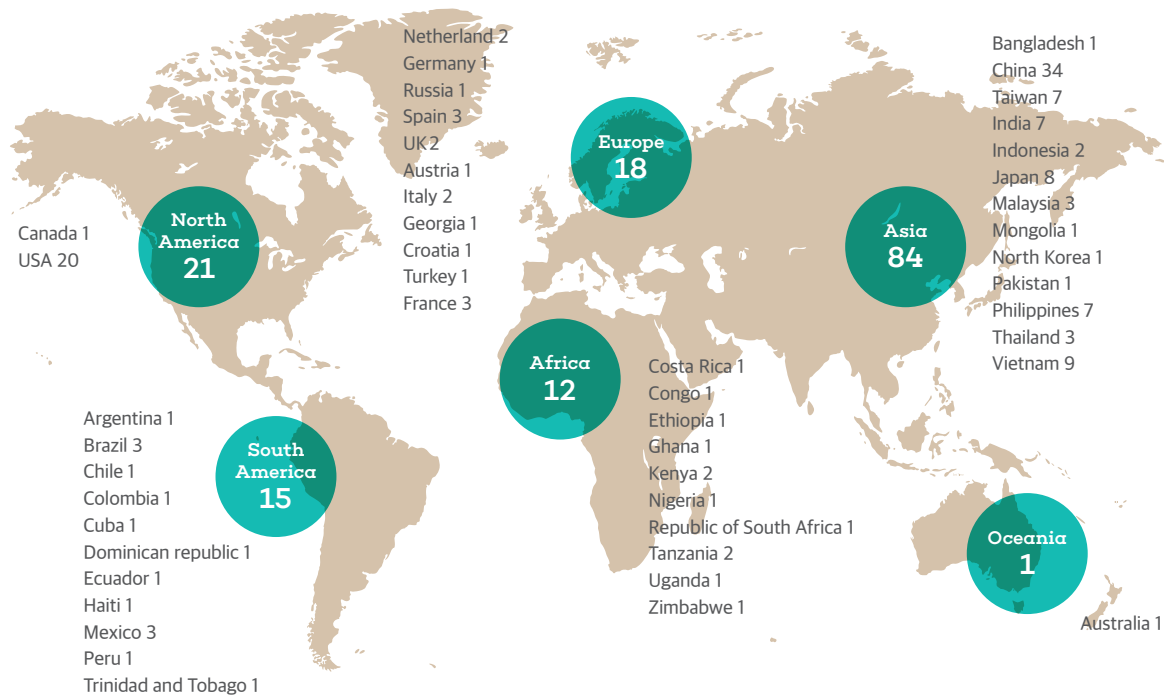
Students are required to complete a total of 200 hours(or 10 weeks) during the four semesters within a year. From beginners to intermediate speakers, the course is open to everyone. Students can enhance their Korean proficiency through assignments, cultural experience and other activities, and quickly adapt to Korean culture.

### Intensive Course

Short-term K-Culture Training Program(2 weeks)  
This course provides two weeks of intensive Korean learning programs during vacations. Foreign students of all nationalities can mingle with one another to improve their Korean proficiency and learn K-Culture through K-pop, K-drama, and more.

### Summer Korean Language & Culture Program (3-6 weeks)

During the vacation period, this program offers Korean language classes to enhance language skills, experience various tourist attractions in Korea, and learn about Korean culture. Through diverse activities and a buddy program, participants can interact with Korean university students, fostering friendships while experiencing K-pop and traditional Korean culture.







•  
**College of Theology**  
•

**SU Heals the World  
with the Spirit of Christ**

In 1906, SU's Theological College opened in Soonan,  
Pyeongannam-do Province to train officials of the Seventh-day Adventist Church.  
Our Theological College stood the test of times along with SU to develop Church  
leaders instilled with a Christian mindset and academic excellence.



**Department of Theology**

As the department training professional ministers, the Department of Theology  
offers holistic education, biblical faith education, professional education based on  
knowledge and practice, education for missionaries prepared to salvage the spir-  
its of humankind, and volunteering education for the sake of human society. Grad-  
uates can choose to work as pastors, church officials, secondary school teachers,  
missionaries, Christian culture ministers, and other ministers at special missionary  
institutions.



## College of Nursing

### SU Trains 21st Century Nightingales Who Treat With Love And Devotion

In an effort to train creative experts with Christian faith, the College of Nursing admitted its first students in 1974 and has produced around 2,500 competent nursing professionals. The College was the first co-ed of its kind among 4-year nursing schools in Korea. MA and Ph.D. courses were established in 1996 and 2011 respectively, and SU has been recognized for its long history as a nursing educational institution for producing instructors and leaders in the nursing sector.



#### Department of Nursing

Nursing is a practical study with its roots in natural science, liberal arts, and social sciences. Students undergo various courses such as Nursing 101(Freshmen), specialized basic courses(Sophomores), specialized basic courses and clinical training(Juniors), and specialized applied courses and integrated clinical training(Seniors) to become future nurses. The Department comes with an excellent reputation and a high employment rate, as most graduates find jobs at tertiary medical centers, public health centers, and public institutions.

## College of Pharmacy

### SU Trains Professional Pharmacists Trusted by the Public

SU has recently integrated the undergraduate course into 6 years and is fulfilling a more professional pharmacological education with MA and Ph.D. courses at the graduate school. In particular, as the most prestigious higher educational institution of its kind, the College of Pharmacy at SU is playing a key role in developing creative professionals in the area of addiction.



#### Department of Pharmacy

The Department offers courses in which students learn to treat with medicinal products based on basic science, including biology, chemistry, physics, and others. Graduates can work in a wide range of sectors including pharmacies, hospitals, pharmaceutical R&D centers, public healthcare institutions, and more.



•  
**College of Creativity and Convergence**  
•



We foster individuals with the skills and  
expertise to excel on the global stage.

The Creative Convergence College is dedicated to nurturing professionals who delve deep into understanding humanity and society, aiming to catalyze positive transformations in our communities. Our program offers practical language fluency tailored for the globalized era, coupled with a wide-ranging creative and interdisciplinary knowledge base.

**Department of English Language and Literature**

With around 50 years of history and legacy, the Department of English Language and Literature offers an advanced education system, including English Language and Literature studies and English Interpretation and Translation studies. Graduates are working in various positions including interpreters, translators, employees in education institutions, trade companies, airlines, general companies, and others.

**Department of Business Administration**

To effectively respond to a rapidly changing business environment amid globalization and digitalization, SU is training future-oriented professional managers. Beyond education on business management principles and practices, the Department is supporting open examination classes and clubs to help students become professionals in each area, including accountants, tax accountants, certified labor attorneys, and others.

**Department of Early Childhood Education**

Competitive teachers are trained at the Department of Early Childhood Education, where students learn to love and teach infants from the bottom of their hearts through a curriculum based on holistic development for children. The importance of infant education and care is becoming increasingly apparent, hence the high employment rate. Graduates can work as education researchers, early childhood counselors, or employees of early childhood education centers



**Department of Global Korean Studies**

The Department of Global Korean Studies develops international Korean studies experts who thoroughly understand and can promote Korea. After various theoretical lectures, cultural experiences, OJT, and internships, students are trained to become “experts in exchanging and promoting Korean culture” and “educators in Korean culture and language.” For domestic students, advanced curriculums including management and planning on cultural institutions related to Korean studies, cultural information planning, cultural policy development, cultural business planning, and others are provided. For foreign students, various educational programs are offered to ensure that they are fully capable of promoting Korean culture and language.



**Division of Aviation Tourism & Foreign Language**

The Department develops students to instill the general aspects that professionals in aviation and tourism should possess, from basic mindsets and practical skills to 2nd language and cultural knowledge. Students can earn two degrees(BA in Literature and Tourism Management) thanks to the dual degree system, and ultimately become global service leaders equipped with language and cultural skills, as well as professional skills in aviation and tourism.





# College of Creativity and Convergence



## Department of Social Welfare

SU pursues innovative smart welfare to tackle global social risks including poverty, disease, aging, and low fertility. It is our mission to develop social welfare professionals equipped with intelligence and creativity based on knowledge from developments in shared economy and welfare technologies. Graduates can work at social welfare, public social welfare institutions, public social welfare institutions, NGOs, and more.

## Department of Counseling Psychology

The Department trains experts providing psychological counseling services for modern people who require psychological help, as well as researchers who perform various activities and studies to promote mankind's happiness and health. Graduates can acquire licenses to become professional counselling teachers, clinical counselors, vocational counselors, addiction counselors, and specialists in other areas of counseling psychology.



## Department of Health & Human Performance

Students at the Department of Health & Human Performance research and implement physical education scientifically to build a sound body and mind, as well as achieve holistic human education. Graduates become leaders in various sectors of leisure sports; such as leisure sports instructors, professional sports instructors, sports curer, sports center managers, teachers, personal trainers, culture and art instructors, and others.



## Department of Music

The Department of Music offers studies including piano, vocal, strings, and pipe and percussions. Students receive systematic education on musical theory and practice to develop themselves into professional musicians capable of expressing their artistic creativity. Students can also take the teacher-training course within the curriculum to acquire a second-grade middle school teaching license. Or, they can serve as professional performance group members at orchestras or choirs.

## Department of Art & Design

The Department develops forward-looking artists and designers who can swiftly read the latest global trends. To this end, the Department of Art & Design offers quality courses by faculty members with ample experiences abroad, the latest educational facilities and equipment, employment and venture strategies in cooperation with industries and public institutions, convergence and capstone design systems, regular art and design exhibition programs, and many more. Graduates have a wide range of choices when finding a job, as the Department is a convergence of Communication Design and Art Content.



# College of Future Convergence

We nurture future leaders of the Fourth Industrial Revolution  
through advanced interdisciplinary technology.

Our goal is to lead the 21st-century of cutting-edge science and steer the future of national industries alongside capable individuals.  
Through specialized education and collaborative research, we develop global leaders in science and technology with a warm spirit,  
creativity, and strong analytical skills.



## Division of Artificial Intelligence Convergence

Based on AI-centric professional engineering competency, students are trained to show knowledge in humanities and social science, as well as insights as future managers. The Division offers three tracks; AI engineering, Management Information Systems(MIS), and intelligent semiconductors.

## Division of Computer Science and Engineering

The Division of Computer Science and Engineering offers systematic education on SW development and advanced convergence competency, along with core technologies of the 4th Industrial Revolution; AI, IoT, big data, and mobile computing technology. SU trains ICT experts proficient in both theory and on-site practice based on project-led courses with industries.

## Department of Data and Cloud Engineering

In the era of the Fourth Industrial Revolution, our department trains software developers to spearhead the growth of the data cloud industry. We offer a diverse range of specialized knowledge, including data processing and analysis, cloud infrastructure management and security, machine learning and deep learning, as well as database and data architecture. Upon graduation, our students are equipped to excel in various roles such as data engineers, data analysts, cloud engineers, and cybersecurity specialists within the realms of big data and cloud computing.



College of Future Convergence



Department of Chemistry Life Science

Based on the students' quest for theoretical and practical knowledge in chemistry and bioscience, SU nurtures talents who will spearhead the knowledge-based industries in the 21st century – Nano Technology(NT), Bio-Technology(BT), and Environment Technology(ET). Graduates can work in various areas of chemistry and bioscience, including research institutions, medical science/pharmacology/pharmaceuticals, food, environment, bio ventures, chemical engineering, new materials development, cosmetics manufacturing, electronics, and semiconductors.

Department of Environmental Design & Horticult

The Department is a combination of the Department of Horticulture and the Department of Eco-green Design which studies ecology. SU is developing the best experts with theory, practice, and field inspections focused on the two pillars of environmental design and horticulture. Graduates can work as display decoration designers, space designers, colorists, and design-related public officials, at nursery companies at home and abroad, at up-to-date agricultural facilities(plant factories), at agricultural product distributors, at food companies, and more.

Department of Animal Science & Resource

SU focuses on bringing technology-centered education to high-tech and bioengineering sectors which can build stronger national competitiveness in the era of bioengineering. The Department trains experts in animal genetic improvement and nutrition and disease, milk and meat processing, animal behavior and ecology, animal bioengineering, Contract Research Organizations(CRO), and others.

Department of Intergrative Biotechnology

Established in 2022, this Department focuses on practical education in cooperation with industries. Based on research and education on future new industries including biomedicine, functional food, cosmetics, and bio healthcare, SU fosters leaders in the bio convergence industry. Graduates can work at national and public research institutions, domestic and foreign bio companies, and many more.



# College of Future Convergence



## Department of Architecture (4-year course)

Unlike the 5-year professional degree course, the Department of Architecture(4-year course) is a general degree which students can select and complete the curriculum of their choice to be best prepared when landing jobs at construction companies, architectural design offices, and other construction-related fields. The Department offers a systematic curriculum to help students build their careers as architects and engineers. In addition, graduates can work in other various related academic areas including architectural engineering and design.



## Department of Architecture (5-year course)

In compliance with the regulations of the International Union of Architects(UIA), SU is running a 5-year educational program to meet international certification requirements for architecture education. SU is training architects as culture creators, civilization critics, and moderators between the city and nature. Less than ten students at a small studio learn the theory and practice of architectural design under the guidance of seasoned professors and prominent architects.

## Department of Physical Therapy

Based on a scientific problem-solving curriculum, students will study the recovery of physical abilities after various diseases and accidents caused in the modern society, and conduct research on treatment methods for efficient health promotion and rehabilitation. Graduates can work at healthcare institutions, sports facilities, rehabilitation research centers, welfare facilities, and others.

## Department of Food and Nutrition

SU develops leaders in promoting public nutrition and health by acquiring scientific knowledge on food and nutrition. From basic science such as chemistry and physiology to applied science including nutritional education and cooking principles, students learn and study diet methods effective in keeping mankind healthy and preventing diseases. Graduates can work in various fields including education research, food and nutrition research, professional nutrition, restaurant management, food companies, and many more.



## Department of Health Management

The Department aims to cultivate students who can improve the health of individuals, groups, local communities, and the global village, as well as enhance the quality of life. To this end, students learn various theories on health counseling, healthcare education, medical management and others, and study how to develop, plan, implement, and evaluate health programs. Graduates can work at health centers, health promotion centers, medical institutions, healthcare industries, health-related public institutions, international bodies and others as health educators, hygienist, special researchers, and more.





•  
**Smith College of Liberal Arts**  
•

**In an Era of Convergence,  
SU Leads Innovation in Liberal Arts**

The College offers structured liberal art courses which develop citizenship, creative thinking, a glocal mindset, initiative, and sharing; the key elements of SU’s MVP. With new courses and structures, the College is setting a role model in liberal arts education

**Smith College of Liberal Arts**

The College is run by a systematic curriculum that offers basic liberal arts education focused on liberal art and foreign language and arts education to reflect global demands. By participating in “good cooperation” to build a harmonious future society and transcend daily life to magnificent art, students are trained to become genuine and cultivated citizens.

**Credits for Graduation**

General(Required) / General(Elective) /  
Foreign Language Course

**Faculty Members**

Basic Liberal Arts / Core Liberal Arts /  
Convergence Liberal Arts







## Graduate School

It is at these graduate schools where future scholars vigorously conduct research and become the light and salt of the world

The graduate schools of SU are the halls of learning, where experts with the best intelligence and character train through in-depth academic exploration and character-building.  
SU's talents instilled with the spirit of truth, love, and volunteering, are building a peaceful world with neighbors.



### School of Graduate Studies

Founded in 1981, Sahmyook University's Graduate School is committed to providing a well-rounded education grounded in the Christian worldview, fostering both academic excellence and holistic character development. With departments spanning Humanities and Social Sciences, Natural Sciences, Arts, and Physical Education, our Graduate School offers a comprehensive range of 63 master's degree programs and 54 doctoral programs. Through rigorous scholarly inquiry, we strive to cultivate highly skilled professionals equipped with faith, character, and specialized knowledge, fulfilling our mission as a leading educational institution.

### Graduate School of Theology

As a premier institution for ecclesiastical education, the Graduate School of Theology at Sahmyook University is dedicated to training future pastors, theologians, and church leaders entrusted with the future of the Korean Adventist Church. Our master's degree programs in Pastoral Studies (M.Div) and Theology (Th.M) are rooted in Christian principles, emphasizing a deep understanding of theological theory based on Scripture and practical application.

### Graduate School of Business Administration

The Graduate School of Business Administration focuses on educating business management principles required to run profit or non-profit organizations and develops sound leadership so that graduates can effectively grow, develop, and respond to a rapidly changing business environment. Graduate students learn the latest business management theories and theories on information science, as well as business management innovation and best practices that executives and managers of organizations should possess. In addition, the Graduate School trains students to become experts equipped with a theoretical and practical background by cultivating leadership.

### Graduate School of Nursing

Our Graduate School of Nursing offers a specialized program in Advanced Clinical Nursing. Nursing's ultimate goal is to foster well-being across physical, social, mental, and spiritual dimensions. To achieve this, we delve into areas such as geriatrics, oncology, and home health nursing, equipping students with advanced nursing theory and practical skills. Our aim is to cultivate professional nurses who contribute to national health as adept practitioners, educators, managers, and researchers in advanced nursing practice.



•  
**Sahmyook University**  
•

Under the Name of  
Sahmyook  
We Become  
One to Build  
Greater SU

**Centers and  
Affiliated Bodies**

**Academic Information Service**

The Academic Information Service(AIS) consists of Academic Information and Information Computing Teams, which oversee on-campus academic information and IT infrastructure, including the library. AIS provides the best service, in line with the rapidly evolving digital environment.

**Lifelong Learning Center**

In an era where life expectancy stretches to 100, the Center provides various educational programs to meet lifetime educational needs. In addition, students can gain help from the Center to unleash their potential, improve their work efficiency, and develop hobbies.

**Museum**

The Museum is a place where visitors are introduced to the daily lives of ancestors, with exhibitions on various replicas of biblical archeological relics and bibles, translations, and general historic data.

**Center for Sports and Culture**

The Center offers various facilities including a swimming pool, basketball court, gym, squash court, and golf driving range. Students, faculty and staff members, and local residents can enjoy healthy leisure activities and promote wellness through structured sports classes.

**Student Counselling Center**

The Center provides private and group counselling and psychological tests free of charge. Students are always welcome to visit and ask for help on various issues including learning, career, interpersonal relationships(family, friend, opposite sex), personality, emotions, and others.

**Gender Equality Center**

The Center prevents and responds to on-campus sexual harassment, violence, and prostitution, and it helps students minimize their damage through counselling.

**Health Promotion Center**

The Center provides non-prescription medicine and health information and helps visitors maintain health and prevent diseases with resting areas, self-checkup services, and more.

**Tobacco and Alcohol Abstinence Clinic**

The Tobacco and Alcohol Abstinence Clinic of SU is the first of its kind among Korean universities. Under the goal of uprooting tobacco and alcohol in all students' lives, the Clinic provides systematic abstinence education.

**Support Center for Students  
with Disabilities**

The Center opens more doors for higher education to students with disabilities and carries out integrated classes with non-disabled students to contribute to social integration and a higher quality of life for mentally and physically challenged students.

**On-campus Church**

Various members including students, graduates, professors, and staff gather to praise and worship the Lord.

**Adventist Church/Ellen G. White  
Research Center**

As an affiliated organization of the General Conference of the Seventh-day Adventist Church, the Center preserves and maintains the legacy of Ellen G. White, and also serves as a theological library in the Adventist Church.

**Institutional Review Board(IRB)**

The Board is an autonomous and independent ethical board launched to ensure adequate protection of bioethics and the safety of researchers and study participants in the process of treating human or human derivatives.

**Pre-school & Childcare Center**

SU is implementing advanced childhood education in a nature-friendly environment, with a curriculum that meets national standards.

**Global Institution for Artistic Talents**

The Institution was founded under the approval of Gyeonggi-do Office of Education on the establishment and operation of an educational center for gifted children. Students hone their string, pipe, vocal, music writing, and piano skills through programs dedicated to prospective talents, gifted children, and advanced students.

**Reserve Force**

To lessen the burdens on local reserve force organizations and reinforce training and operation quality, SU is operating its on-campus reserve force for students, faculty, and staff members.





- 1 Centennial Memorial Hall
- 2 Theology Hall
- 3 Smith Hall
- 4 International Education Hall
- 5 SAY
- 6 Samuel Hall
- 7 Eden Residence Hall
- 8 Foreign Faculty Housing
- 9 Rodem Hall
- 10 Peniel Residence Hall
- 11 Multil Hall
- 12 University Church
- 13 Salem Residence Hall
- 14 Cafeteria
- 15 Zion Residence Hall
- 16 Music Hall
- 17 Auditorium
- 18 Practical Education Bldg. 1
- 19 Design Hall
- 20 Animal Laboratory
- 21 Woodworking Lab
- 22 Greenhouse
- 23 Art & Design Hall
- 24 Central Library
- 25 Ezra Hall
- 26 Science Hall 1
- 27 Science Hall 2
- 28 Daycare Center
- 29 Food & Nutrition Lab
- 30 Student Counseling Center
- 31 Daycare Center
- 32 Life-long Education Center/kindergarten
- 33 Science Hall 3
- 34 Newstart Center
- 35 Daniel Hall/John Hall/Museum
- 36 Paul Hall
- 37 Students Center
- 38 Sports Center

- By Subway**
- Get off at Seokgye Station(Line 1 & 6), and use Exit #4 to take buses #1155 headed to Sahmyook University
  - Get off at Taereung Station(Line 7), and use Exit #7 to take buses #1155 headed to Sahmyook University
  - Get off at Hwarang-dae Station(Line 6), and use Exit #1 to take buses #202, #1155, #2212, or #82B headed to Sahmyook University
  - Get off at Byeollae Station(GyeongChun Line), and use Exit #2 to take the SU school bus

- Regular Bus**
- (From Cheongnyangri) Take buses #202 and get off at Sahmyook University(Approx. 30 Min.)
  - (From Seokgye Station) Take buses #1155 and get off at Sahmyook University main entrance(Approx. 15 Min.)

**School Shuttle Bus(during semester)**

A.M.(from Hwarang-dae Station)	
08:10 ~ 10:00	10:00 ~ 12:00
5 Min. interval	20 Min. interval
P.M.(From SU to Seokgye Station)	
12:00 ~1 5:00	15:00~18:15
25 Min. interval	20 Min. interval
Last bus on Friday 15:30	
All Day (Byeollae Station(Sahmyook Univ. Station) – SU)	
08:40~17:40(1 Hour. interval) / Last bus on Friday 15:40	

**• P.M.(From SU to Seokgye Station)**



# Campus Map

- A Oyat-Bong(Prayer Hill)
- B James Lake
- C Faculty Tennis Court
- D Student Tennis Court
- E East Gate
- F Solomon Square
- G Sports Field
- H Elementary School
- I High School Administration Hall
- J Middle School
- K High School Dormitory
- L High School Auditorium
- M High School
- N Main Gate